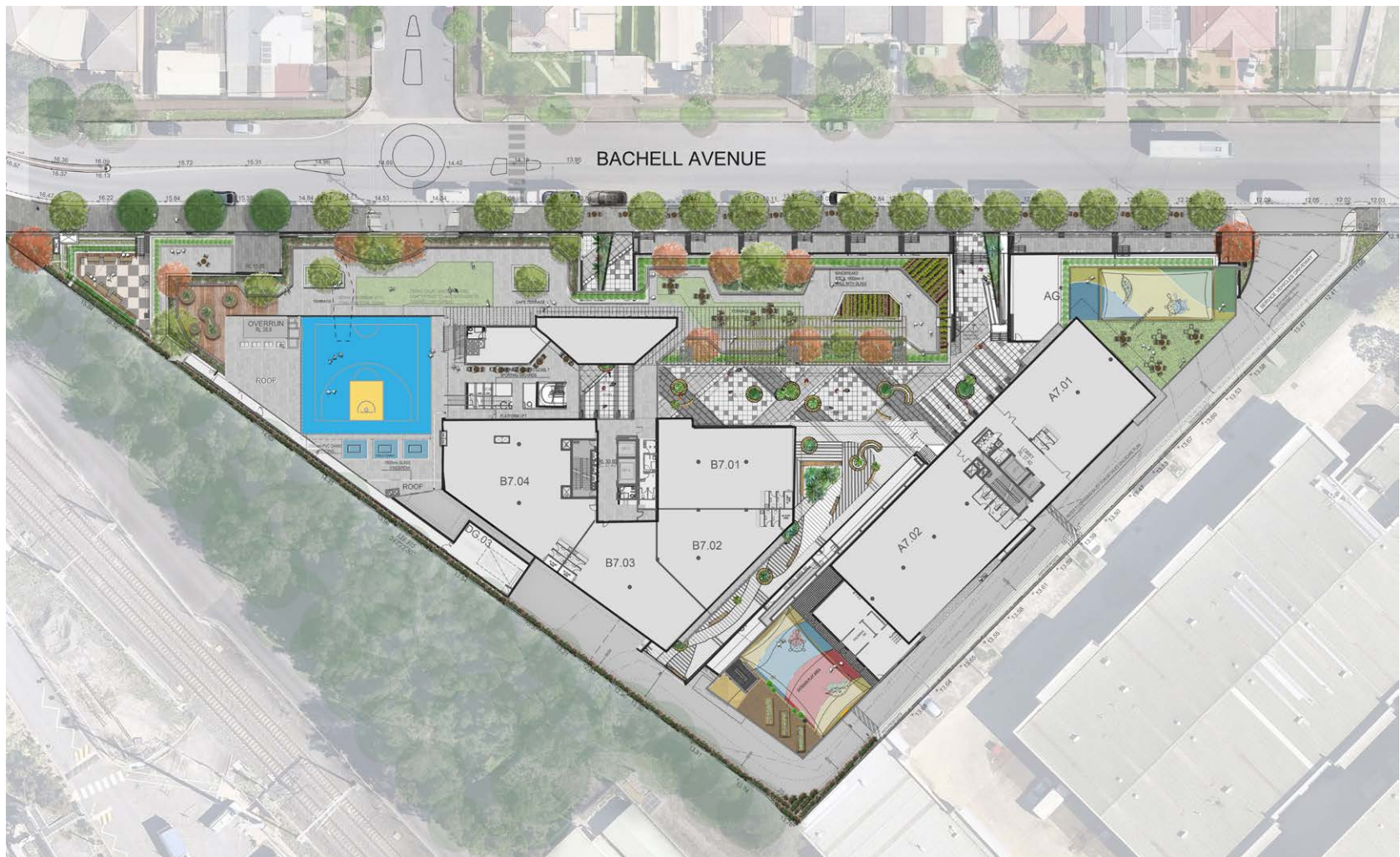


THE HUB - Lidcombe

2 Bachell Avenue, Lidcombe



LANDSCAPE SHEET REGISTER

DRAWING	TITLE	REVISION
55-20.01	LOCATION & CONTEXT PLAN	D
55-20.10	LANDSCAPE MASTERPLAN	D
55-20.11	DEEP SOIL PLAN	D
55-20.12	CANOPY COVER PLAN	D
55-20.13	MOOD IMAGERY - GROUND FLOOR	D
55-20.14	SPATIAL PROGRAMMING - GROUND FLOOR	D
55-20.15	LANDSCAPE PLAN - GROUND FLOOR	D
55-20.16	DETAIL PLANS - GROUND FLOOR	D
55-20.20	MOOD IMAGERY - LEVELS 1-4	D
55-20.21	SPATIAL PROGRAMMING - LEVEL 1	D
55-20.22	LANDSCAPE PLAN - LEVEL 1	D
55-20.23	SPATIAL PROGRAMMING - LEVEL 2	D
55-20.24	LANDSCAPE PLAN - LEVEL 2	D
55-20.25	SPATIAL PROGRAMMING - LEVEL 3	D
55-20.26	LANDSCAPE PLAN - LEVEL 3	D
55-20.27	SPATIAL PROGRAMMING - LEVEL 4	D
55-20.28	LANDSCAPE PLAN - LEVEL 4	D
55-20.29	DETAIL PLAN - LEVEL 4	D
55-20.30	MOOD IMAGERY - LEVELS 5-8	D
55-20.31	SPATIAL PROGRAMMING - LEVEL 5	D
55-20.32	LANDSCAPE PLAN - LEVEL 5	D
55-20.33	DETAIL PLAN - LEVEL 5	D
55-20.34	ELEVATIONS - LEVEL 5	D
55-20.35	SPATIAL PROGRAMMING - LEVEL 6	D
55-20.36	LANDSCAPE PLAN - LEVEL 6	D
55-20.37	SPATIAL PROGRAMMING - LEVEL 7	D
55-20.38	LANDSCAPE PLAN - LEVEL 7	D
55-20.39	SPATIAL PROGRAMMING - LEVEL 8	D
55-20.40	LANDSCAPE PLAN - LEVEL 8	D
55-20.41	SECTION AA - BACHELL AVENUE	D
55-20.42	PLANT PALETTE	D
55-20.43	PLANTER BOX DETAILS	D
55-20.44	DETAILS, NOTES & SCHEDULES	D
55-20.45	LANDSCAPE DETAILS	D

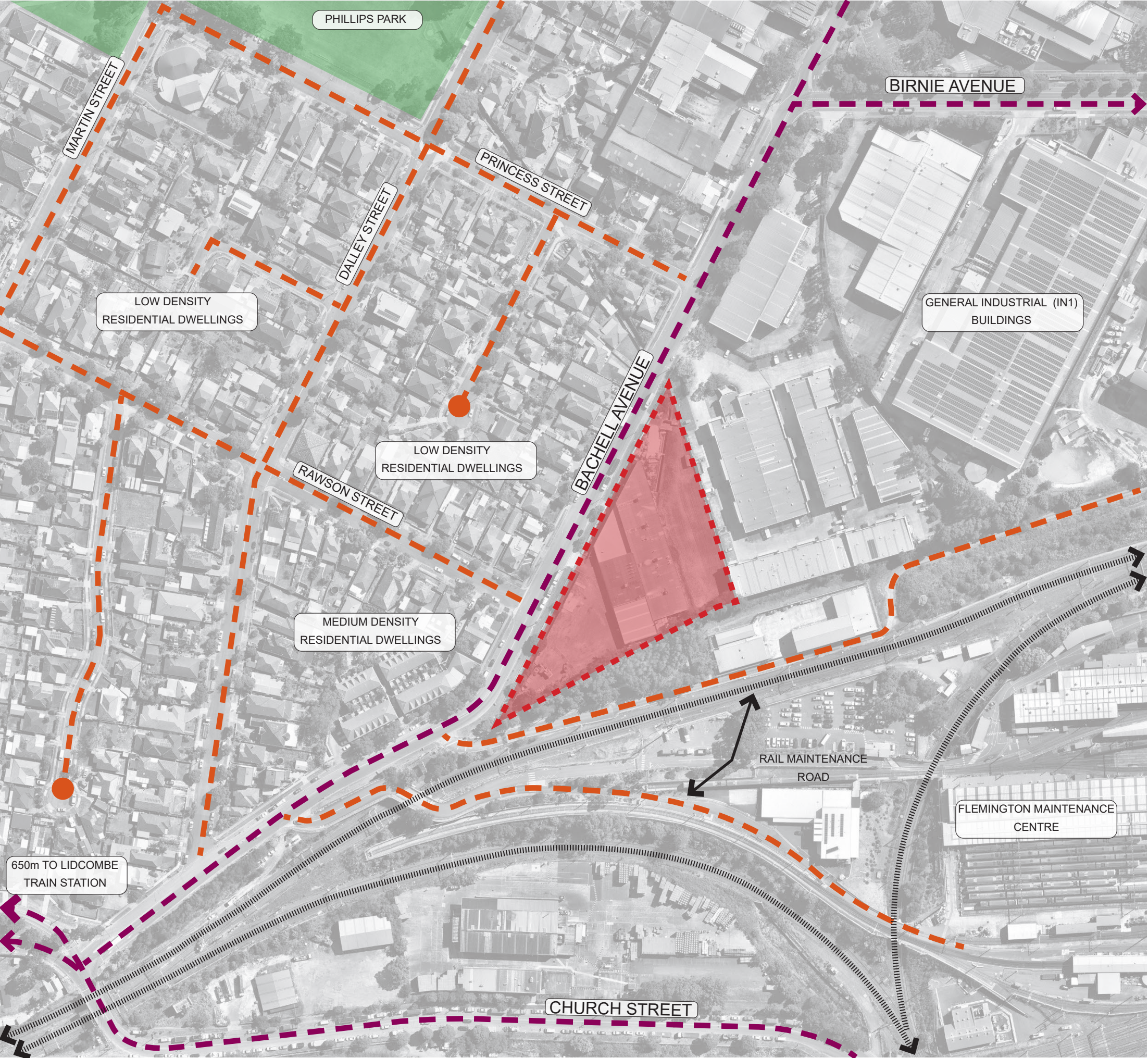
LANDSCAPE DA (Development Application) - Revised

SEPTEMBER 2024



Client: Road Property Acquisition
No 10 Pty Ltd
Project No: 55-20
Revision: D
Date: 27.09.24

distinctive Living Design
Landscape & Interior Architecture - Design - Consultancy
56 John St, Camden NSW 2570
PH: 02 4655 1881
www.distinctive.net.au



- LEGEND
- THE SUBJECT SITE
 - ARTERIAL ROAD CONNECTIONS
 - COLLECTOR ROAD CONNECTIONS
 - LOCAL ROAD CONNECTIONS
 - MAJOR INTERSECTIONS
 - MINOR INTERSECTIONS
 - BUS STOPS
 - RAILWAY



BACHELL AVENUE FRONTAGE
NORTHBOUND



BACHELL AVENUE FRONTAGE
SOUTHBOUND




AA






AREAS

Total Site Area (Incl. Streetscape) =	9507m2
Approx. Existing Canopy Cover =	1.1%
Approx. Proposed Canopy Cover =	440m2
Proposed Canopy Cover % =	4.6%

PROPOSED TREES (incl Streetscape) 

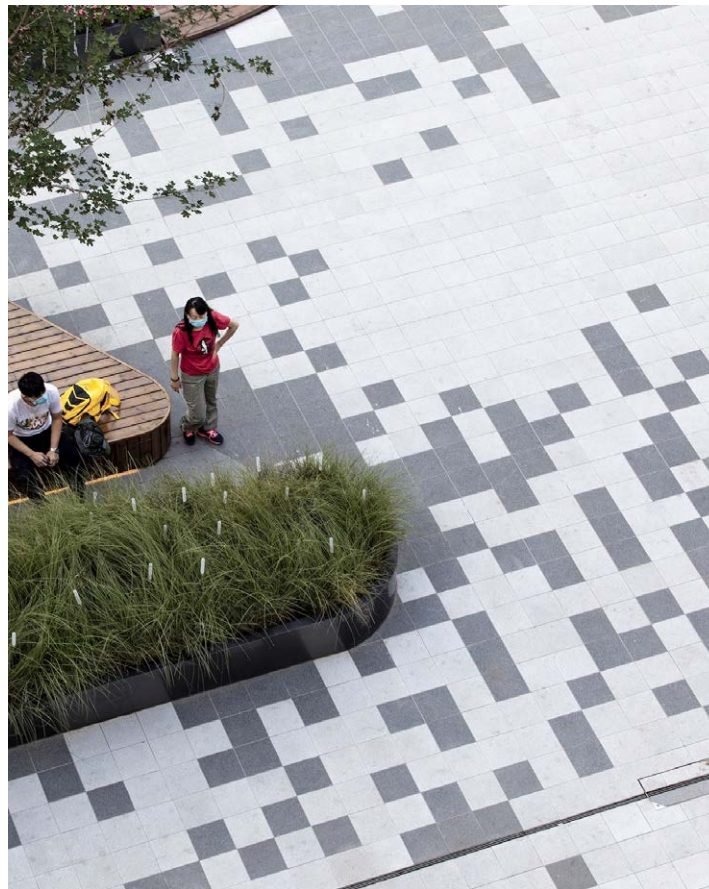
EXISTING TREES (to be retained) 



RAISED INTERACTIVE PLANTER BOXES ACTIVATE INTERNAL PLAZA AREA WITH VOID



ACTIVATED STREETFRONT WITH DINING



PASSIVE SEATING AREAS TESELATED PAVING DESIGN



KERB EXTENSION WITH OUTDOOR DINING



AREAS FOR BOTH FIXED AND NON FIXED SEATING WITHIN PLAZA AREA



The HUB @ Lidcombe

SPATIAL PROGRAMMING - GROUND FLOOR





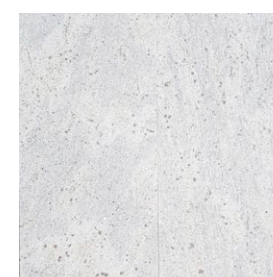
Ground Floor Plaza Detail Plan - 1:200@A3



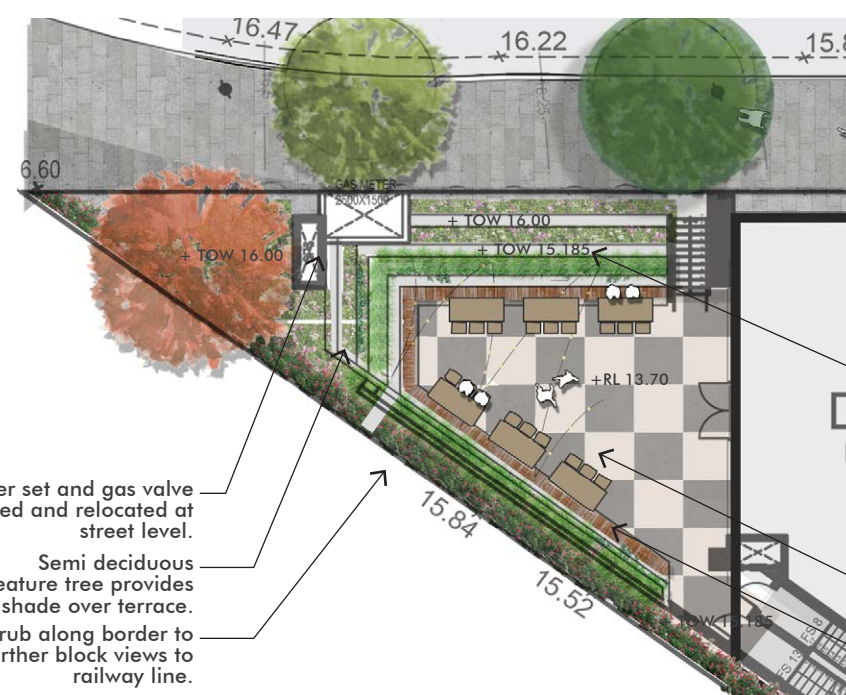
BLUESTONE PAVER



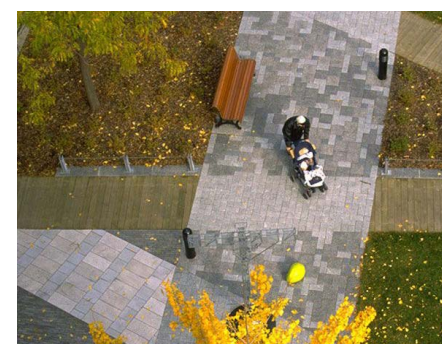
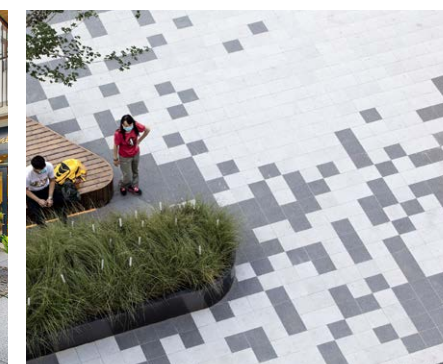
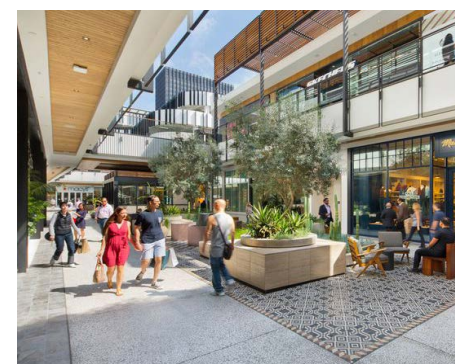
GREY GRANITE PAVER



WHITE GRANITE PAVER



Cafe Terrace Detail Plan - 1:200@A3





OUTDOOR FURNITURE FIXED AND INTEGRATED WITH RAISED CONCRETE PLANTERS.



FIXED RAISED CONCRETE PLANTERS - PLANTED WITH SMALL TREES, SHRUBS & GROUNDCOVERS, SPILLOVER SPECIES



FIXED RAISED CONCRETE PLANTERS - PLANTED WITH SMALL TREES, SHRUBS & GROUNDCOVERS, SPILLOVER SPECIES



SPILLOVER PLANTING & GREEN ARCHITECTURE



SPILLOVER PLANTING & GREEN ARCHITECTURE



SPILLOVER PLANTING & GREEN ARCHITECTURE

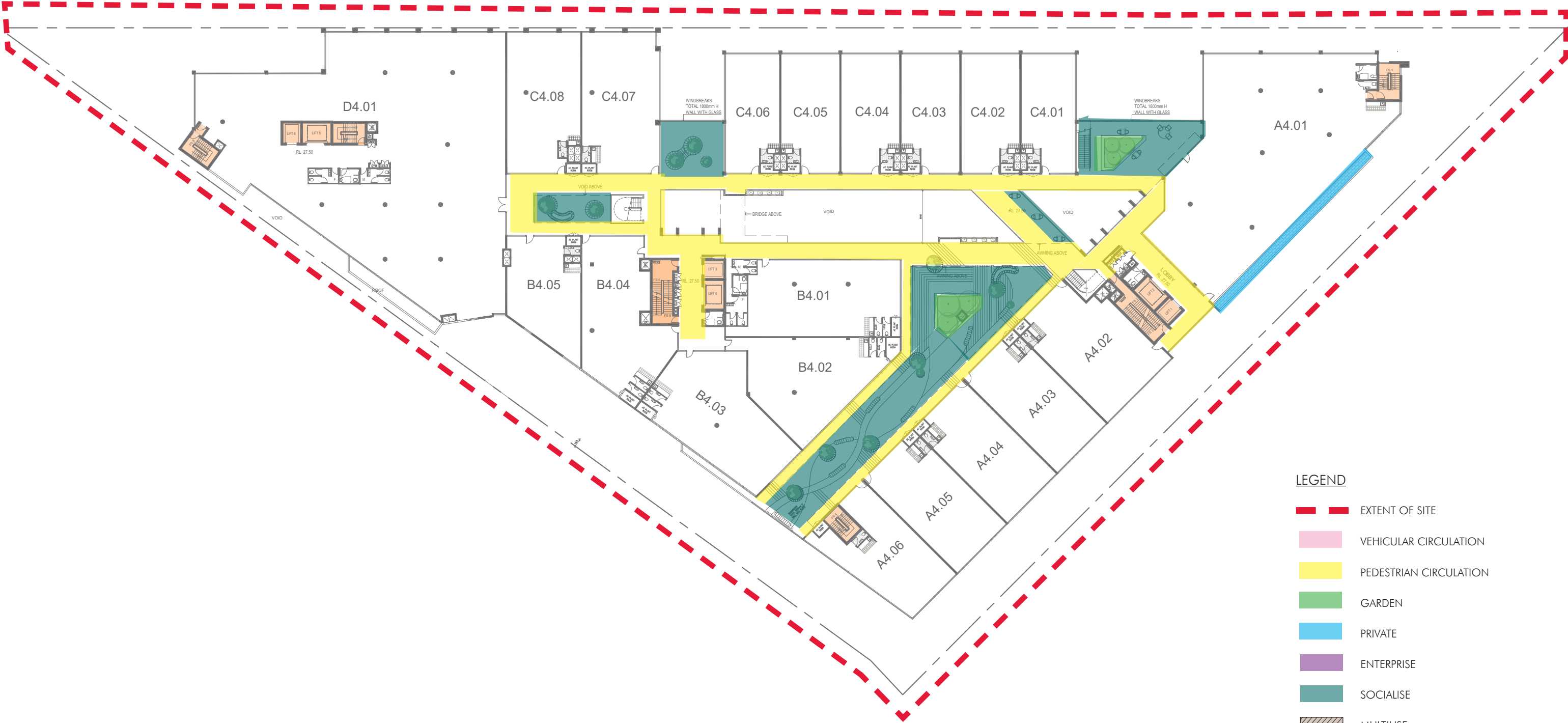


LEGEND

- EXTENT OF SITE
- VEHICULAR CIRCULATION
- PEDESTRIAN CIRCULATION
- GARDEN
- PRIVATE
- ENTERPRISE
- SOCIALISE
- MULTIUSE







LEGEND

- EXTENT OF SITE
- VEHICULAR CIRCULATION
- PEDESTRIAN CIRCULATION
- GARDEN
- PRIVATE
- ENTERPRISE
- SOCIALISE
- MULTIUSE



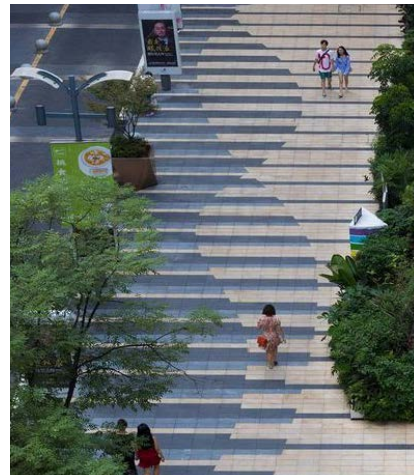
BLUESTONE PAVER



GREY GRANITE PAVER



WHITE GRANITE PAVER

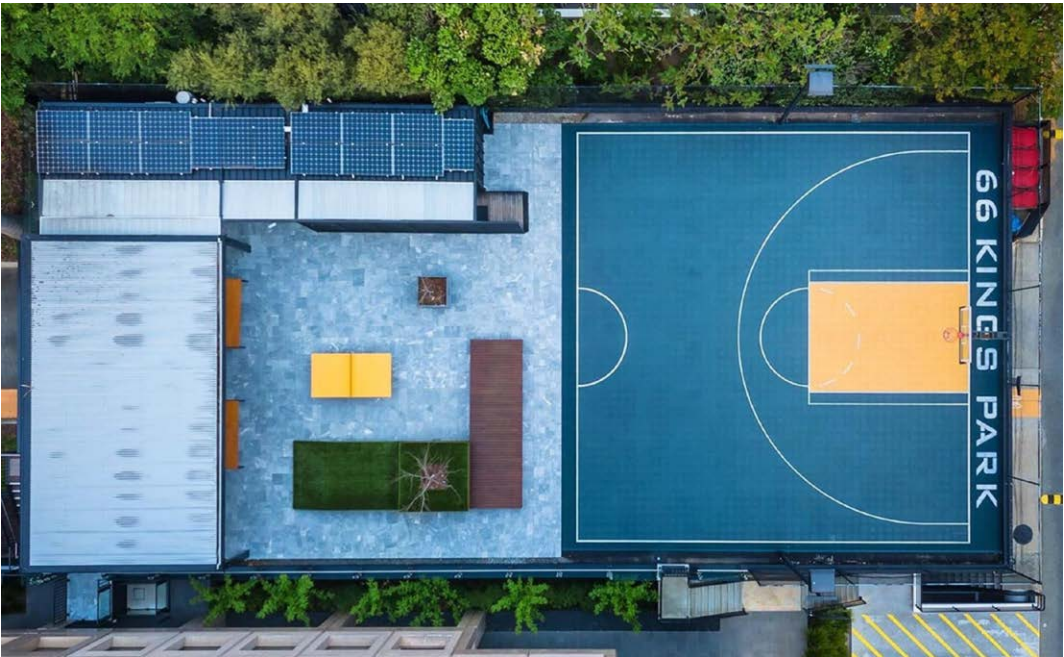




CHILDCARE WITH VIBRANT RUBBER SOFTFALL PATTERNS



ROOFTOP BASKETBALL COURT CONNECTED TO FOOD & BEVERAGE TENANCY

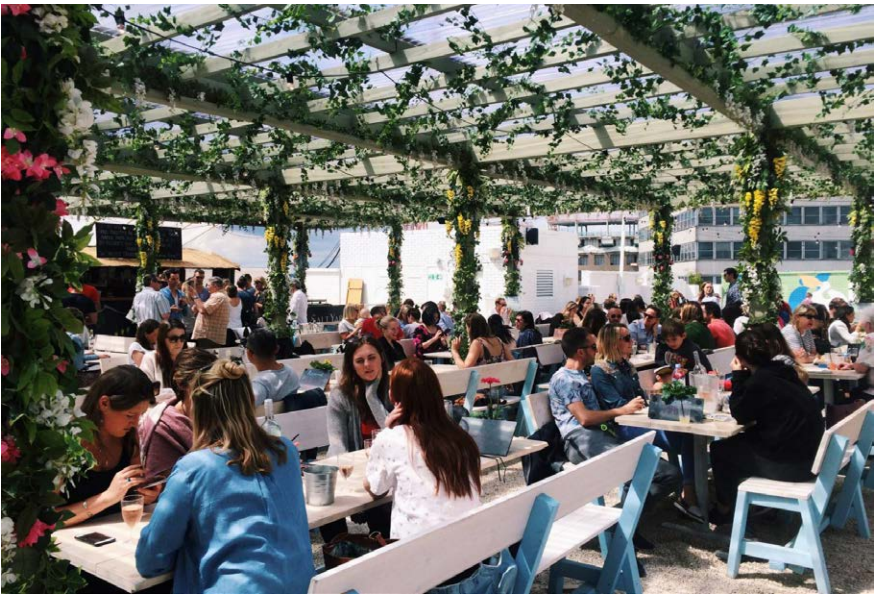


PRECEDENT: DONNIE TACO PERTH, WA

[HTTPS://DONNIETACO.COM/](https://donnietaco.com/)



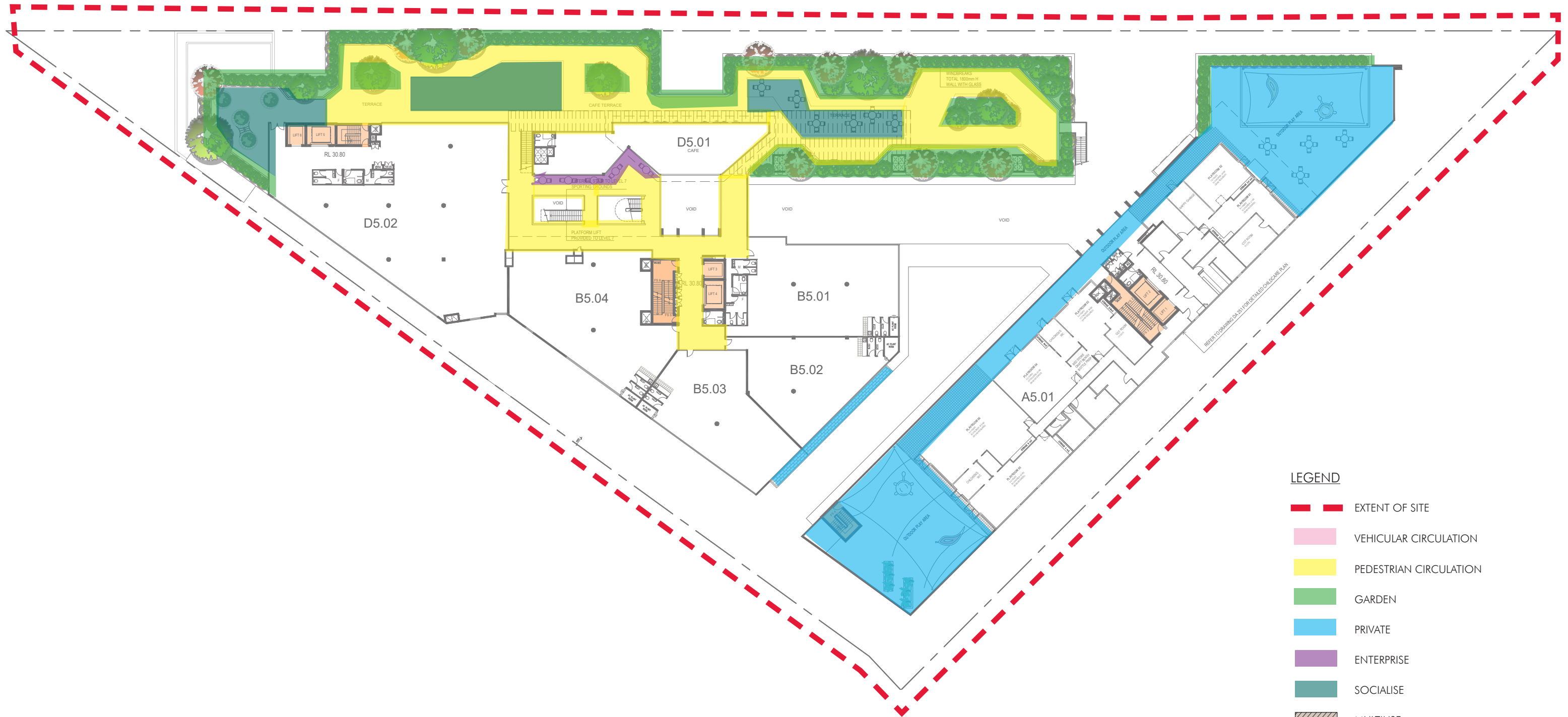
ACTIVATED ROOFTOP WITH PASSIVE AND ACTIVE SPACES & LANDSCAPE



OUTDOOR CAFE SEATING



ACTIVATED ROOFTOP WITH PASSIVE AND ACTIVE RECREATION



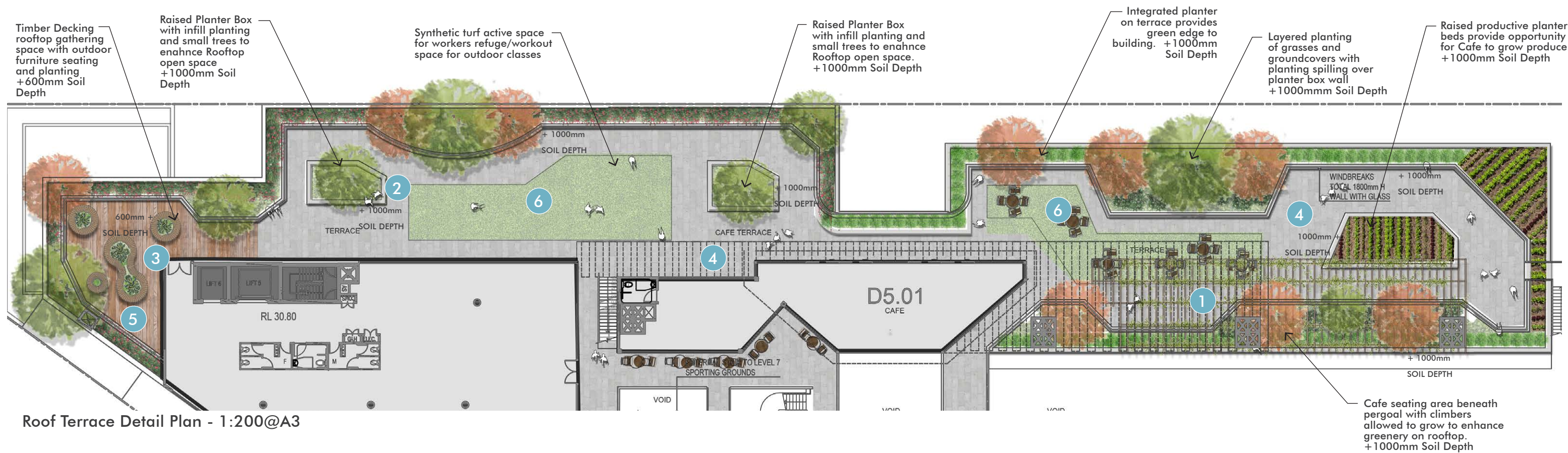
The HUB @ Lidcombe
LANDSCAPE PLAN - LEVEL 5

Client:
Raad Property Acquisition
No 10 Pty Ltd

Architect:
two form
ARCHITECTURE + INTERIOR DESIGN

Sheet No: 55.20.32
Drawn: PG/DB
Scale: 1:500 @ A3
Revision: D
Date: 27.09.24





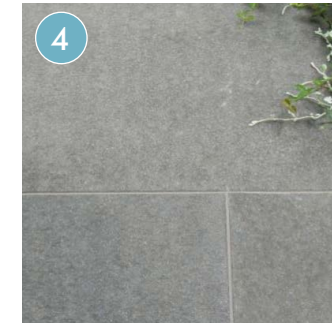
Cafe seating area



Raised Landscape planters



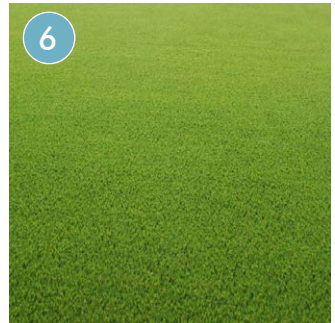
Rasied decking area



Bluestone Pavers
Eco outdoor - Heron
<https://www.ecooutdoor.com.au/>



Timber decking
Spotted Gum



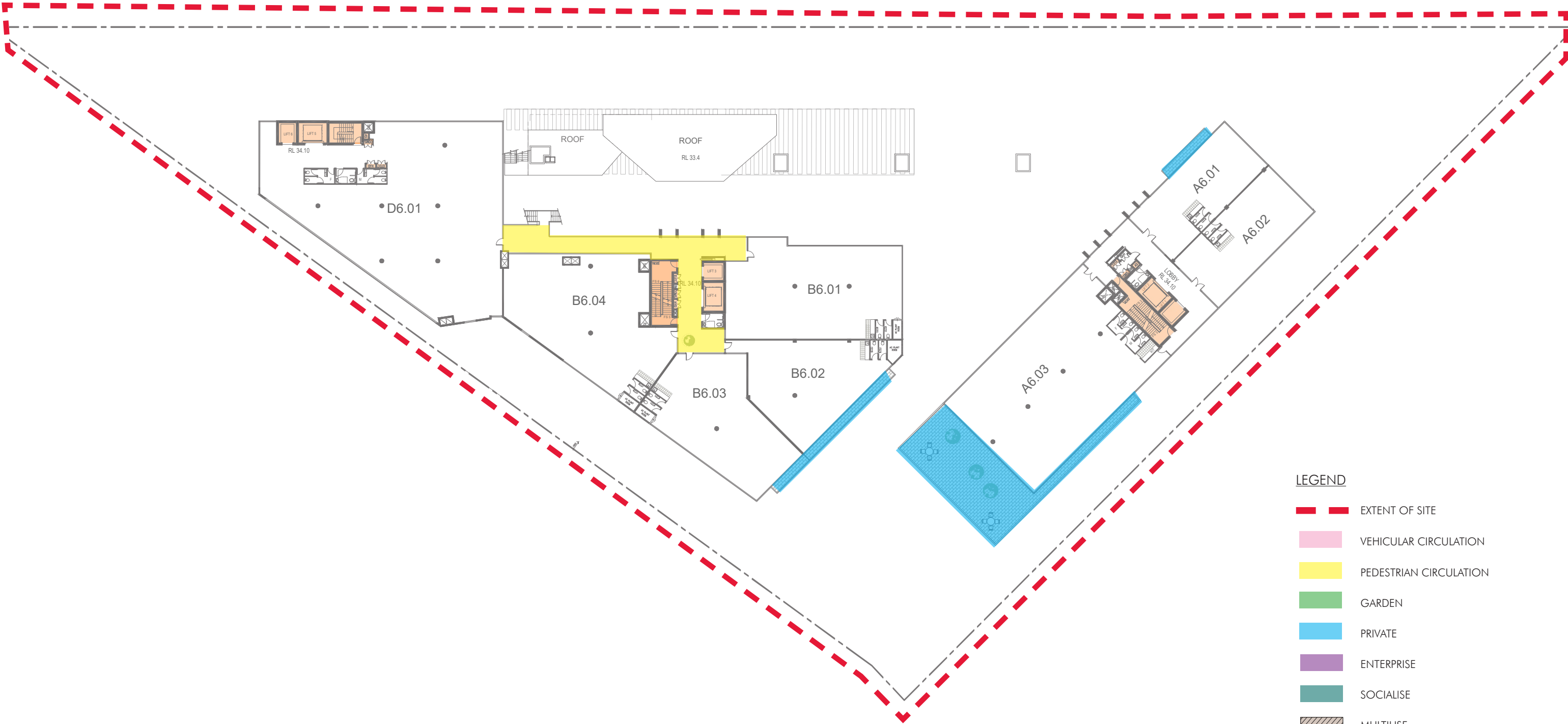
SyntheticTurf
Summer prestige



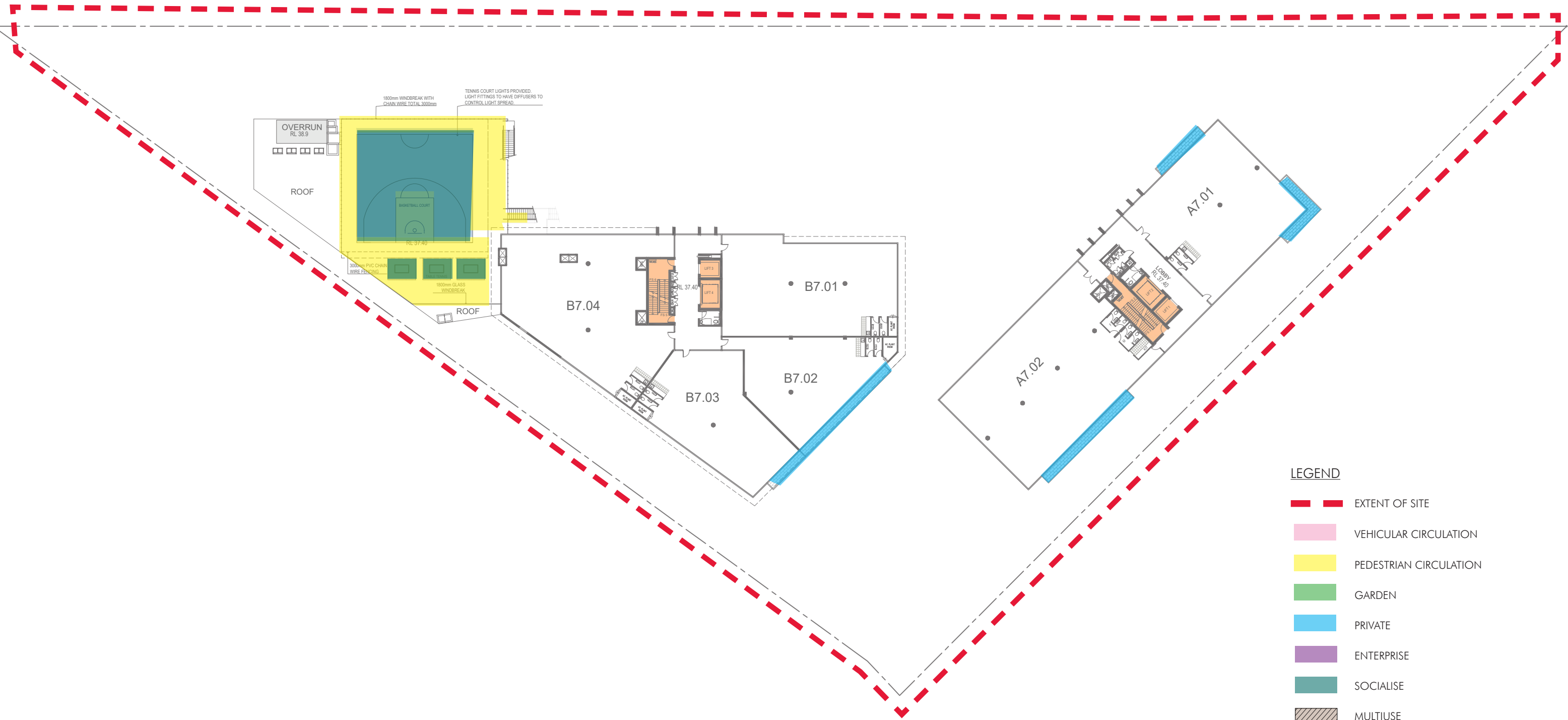
Section AA - 1:200@A3

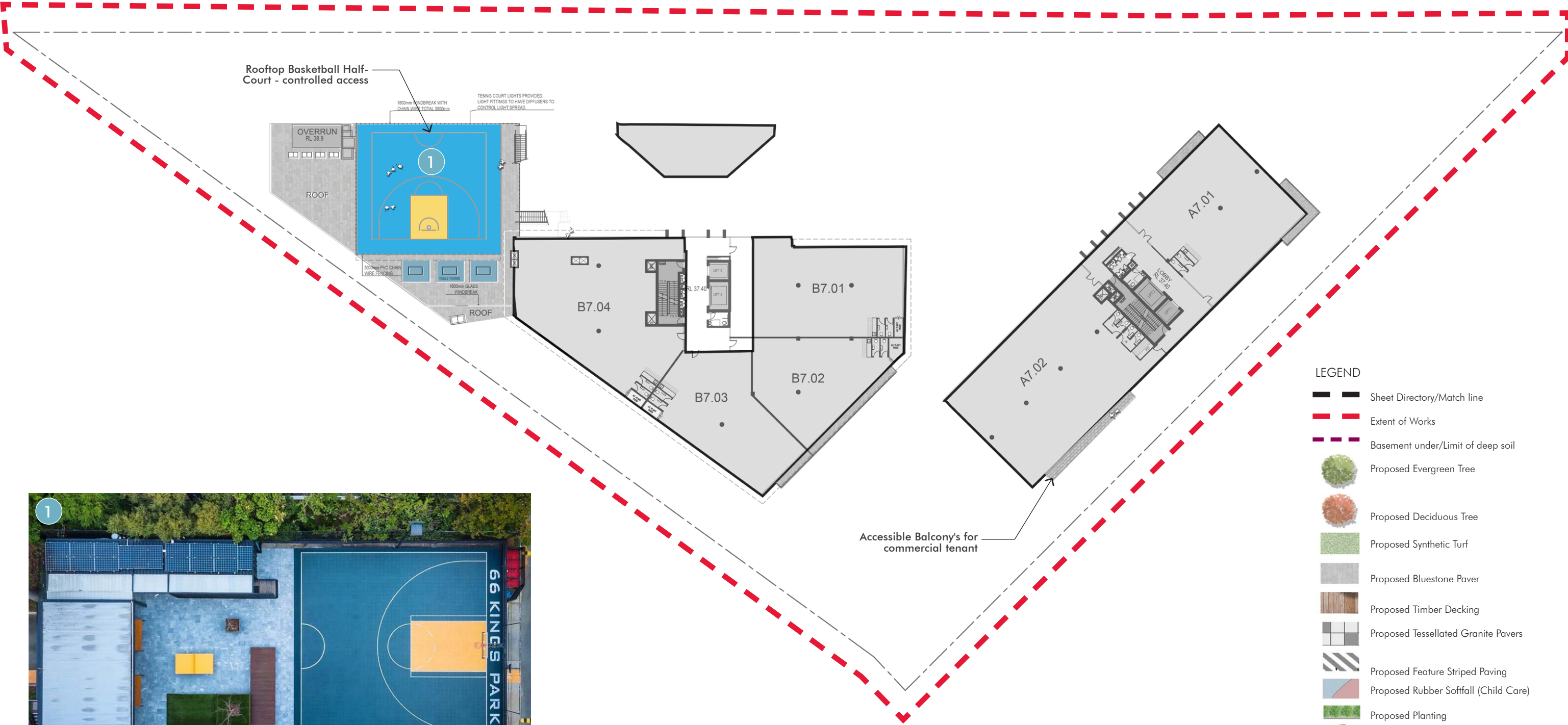


Section BB - 1:200@A3

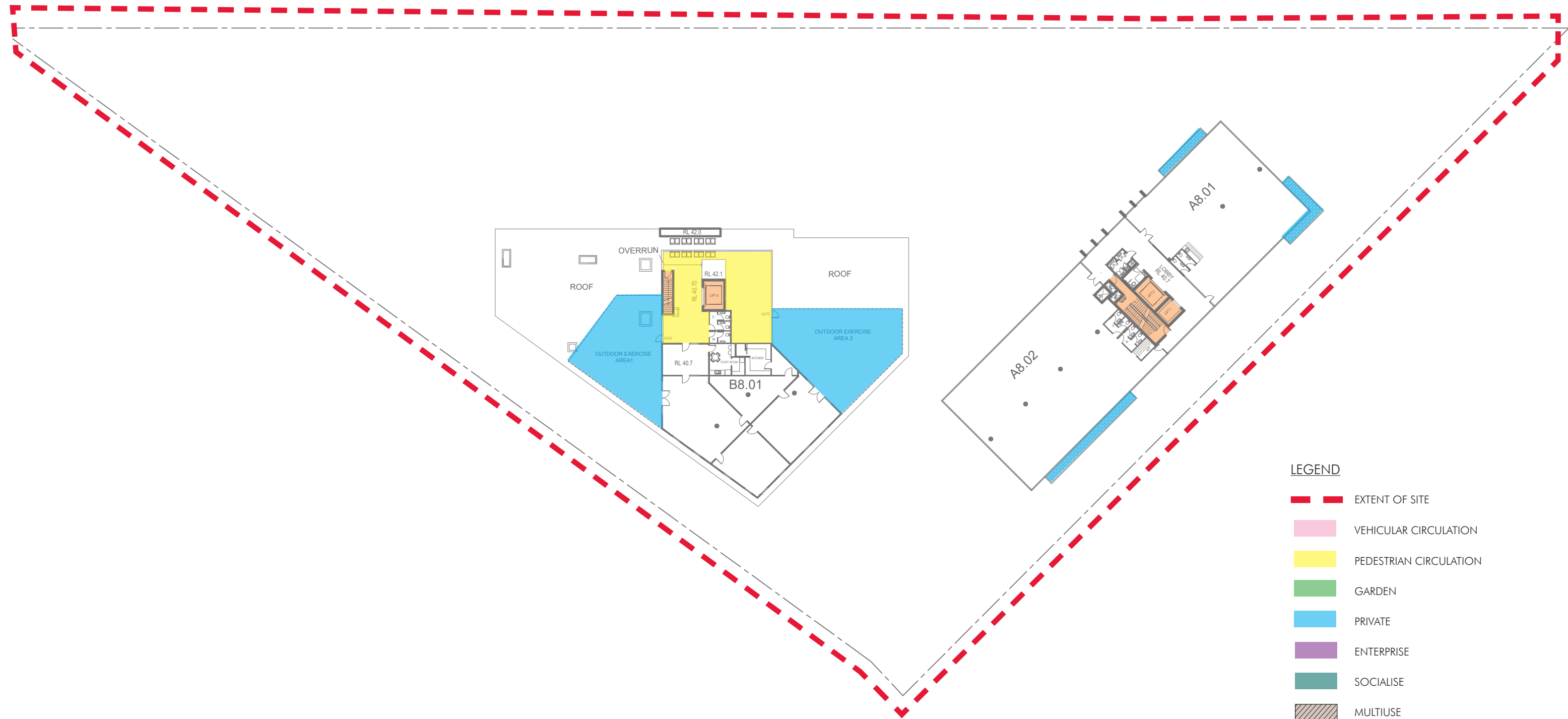








- LEGEND
- Sheet Directory/Match line
 - Extent of Works
 - Basement under/Limit of deep soil
 - Proposed Evergreen Tree
 - Proposed Deciduous Tree
 - Proposed Synthetic Turf
 - Proposed Bluestone Paver
 - Proposed Timber Decking
 - Proposed Tessellated Granite Pavers
 - Proposed Feature Striped Paving
 - Proposed Rubber Softfall (Child Care)
 - Proposed Planting
 - Proposed Outdoor Furniture Items/Planting
 - Proposed Fixed Timber Bench Seating

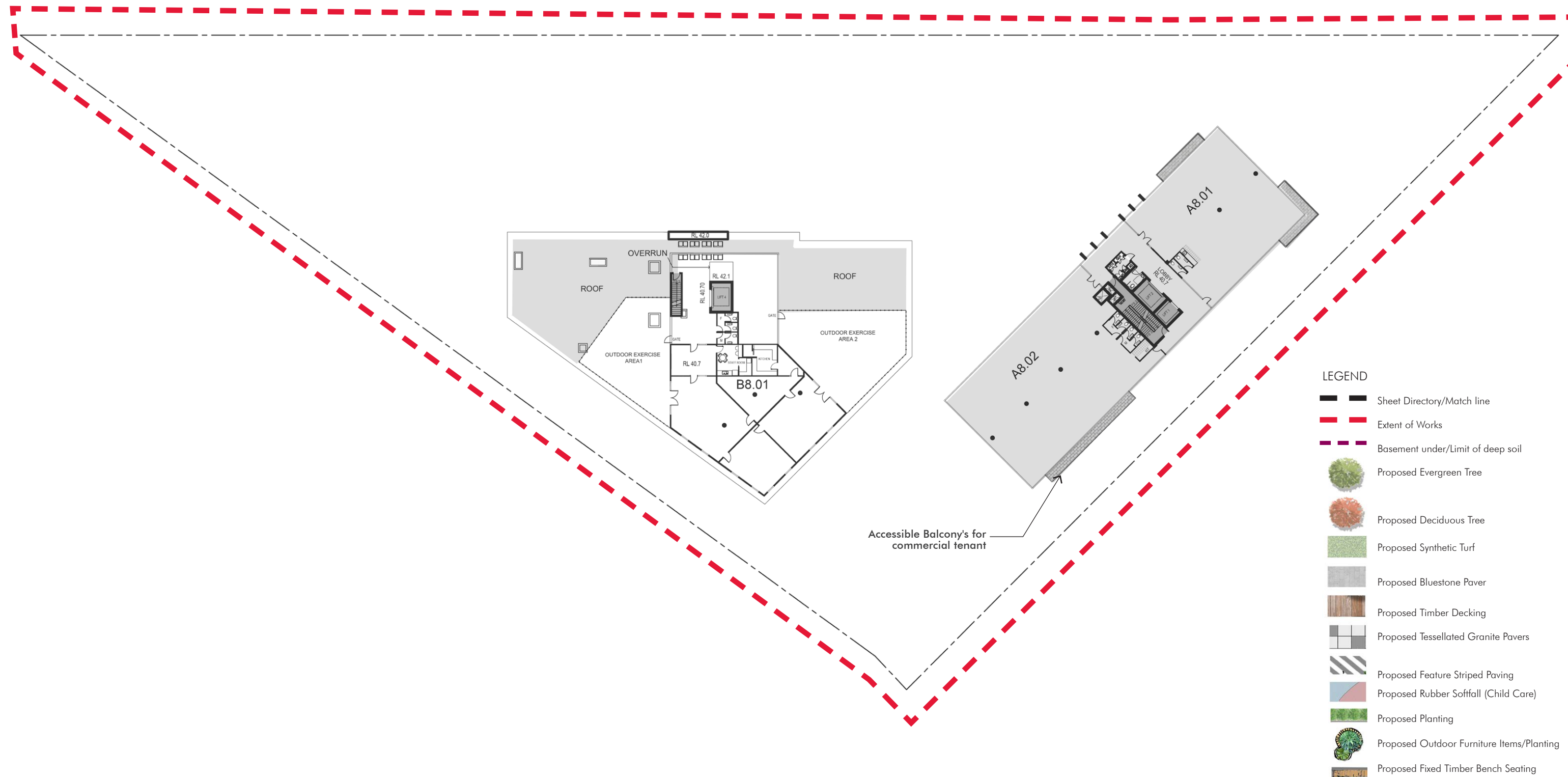


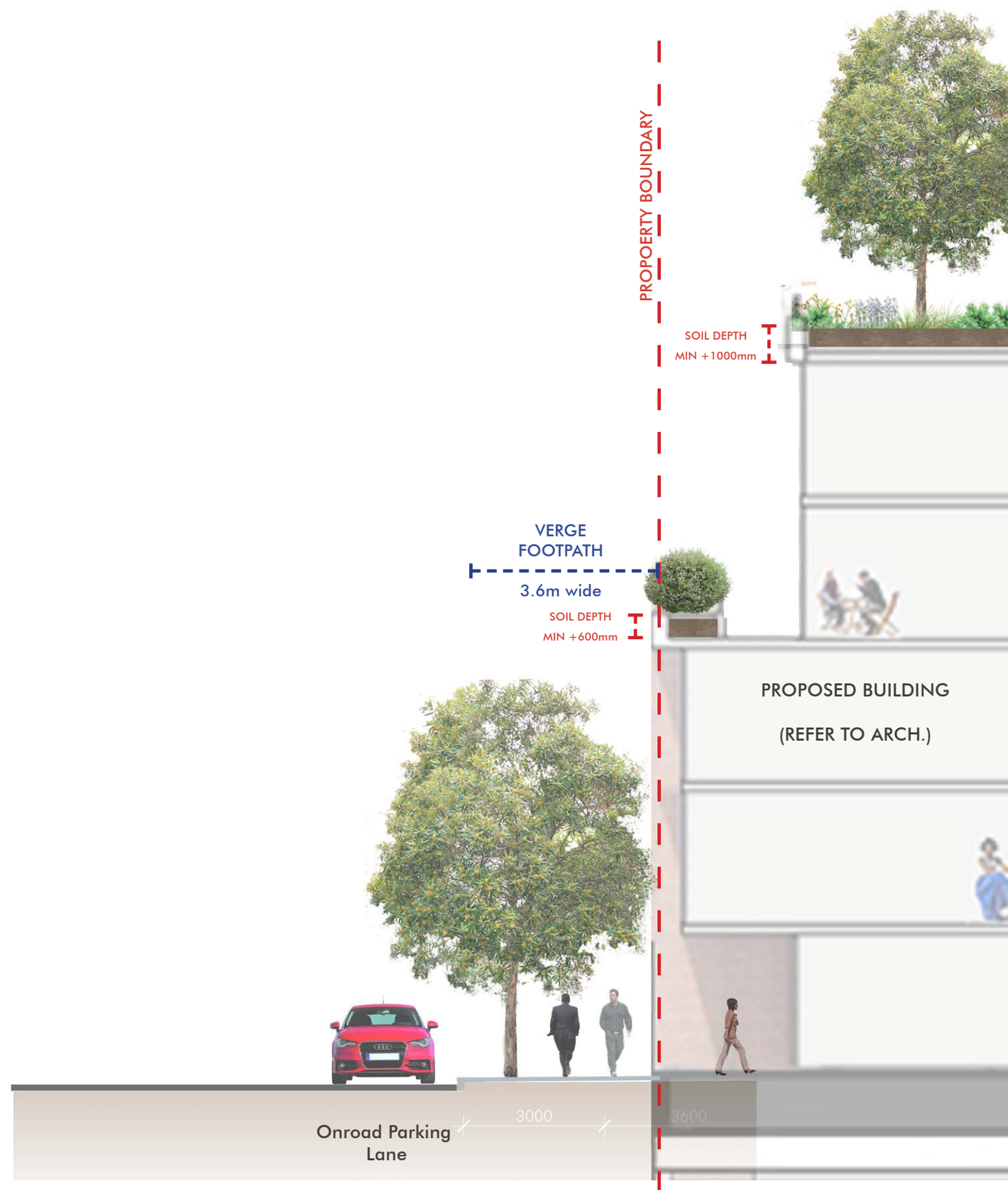
The HUB @ Lidcombe
LANDSCAPE PLAN - LEVEL 8

Client:
Raad Property Acquisition
No 10 Pty Ltd

Architect:
two form
ARCHITECTURE + INTERIOR DESIGN

Sheet No: 55.20.40
Drawn: PG/DB
Scale:
Revision: D
Date: 27.09.24





STREET TREES



Tristaniopsis laurina 'Luscious'

PUBLIC DOMAIN TREES



Fraxinus excelsior Nana



Olea europaea



Lagerstroemia indica x fauriei 'Zuni'



Dracaena draco



Citrus lemon



Calodendrum capense (N)



Ceratopetalum gummiferum



Buckinghamia celsissima(N)

SHRUBS



Westringia fruticosa 'Zena'



v



Asplenium australasicum 'Birds Nest'



Alocasia macrorrhiza



Philodendron xanadu



Anigozanthos flavidus 'Orange Cross'



Anigozanthos flavidus 'Big Red'



Rhapiolepis orientalis 'Snow Maiden'



Murraya paniculata

GROUNDCOVERS



Dichondra repens 'Silver Falls' (N)



Liriope muscari 'Isabella'



Lomandra longifolia 'Verday' (N)



Senecio serpens



Rosmarinus officinalis prostratus



Trachelospermum jasminoides



Acacia cognata 'Waterfall'



Acacia cognata 'Mini Cog'



Kalanchoe bracteata

GROUNDCOVERS



Dichelachne crinita (N)



Lomandra fluviatilis (N)



Myoporum parvifolium (N)



Lomandra longifolia 'Tanika' (N)



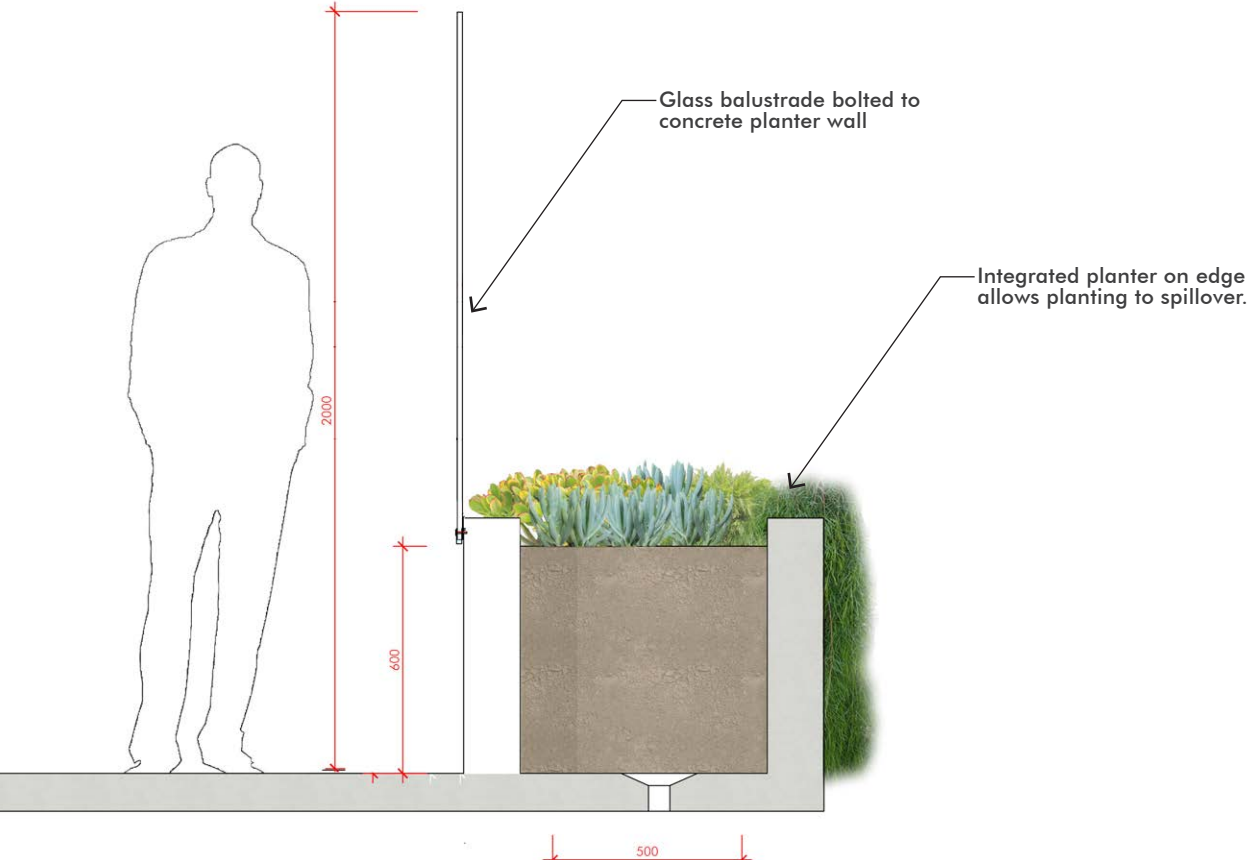
Dianella caerulea



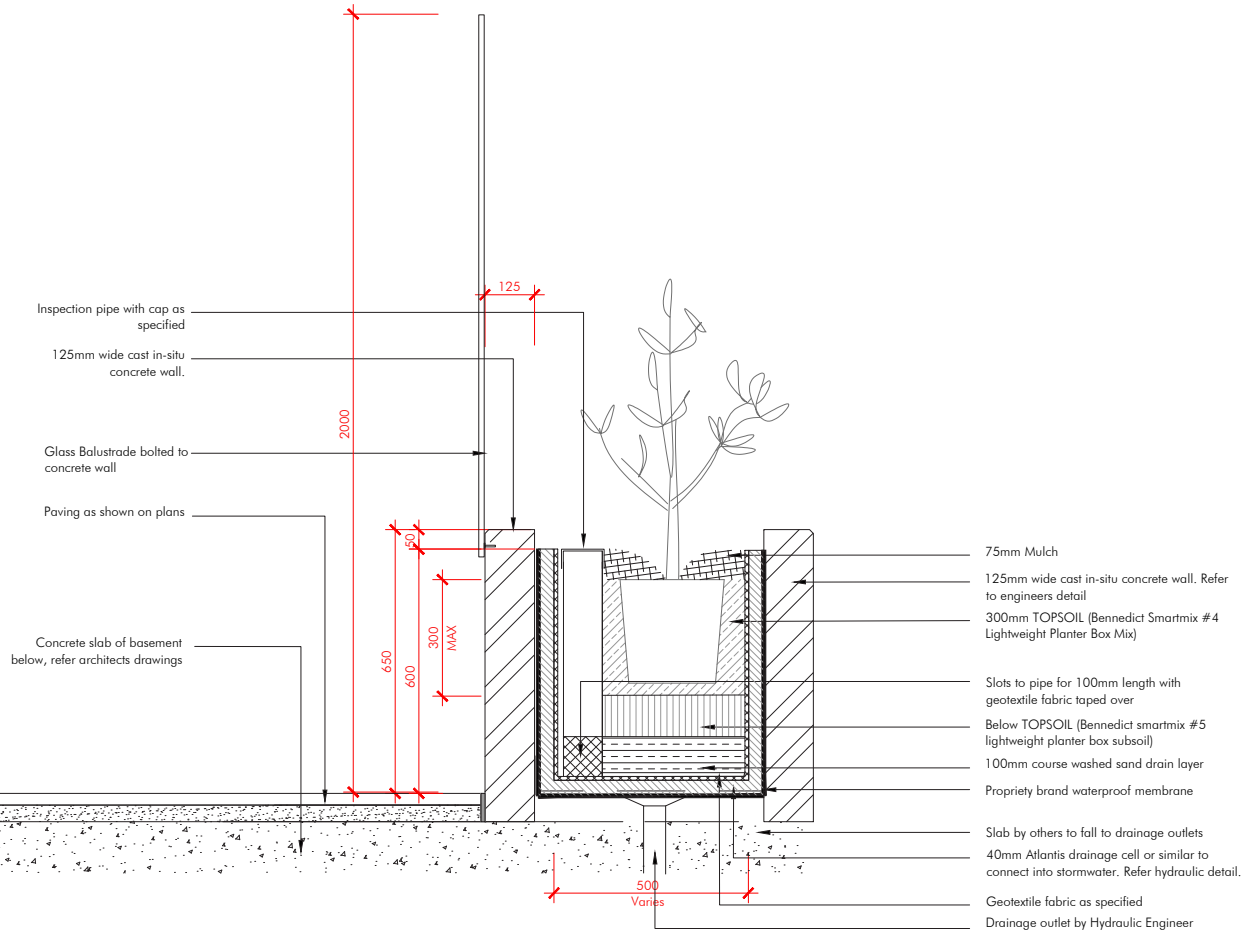
Banksia spinulosa 'Birthday Candles'



Crassula ovata 'Sunset'



Typical Planter Edge - Indicative 1:20@A3



Typical Plant Edge - Details 1:20@A3

Planter Box Species

Matrix 1 (based on 5:1:2 ratio)



Dichondra repens 'Silver Falls'



Rosmarinus officinalis
prostratus



Trachelospermum
jasminoides

Matrix 2 (based on 3:4:5 ratio)



Acacia cognata 'Waterfall'



Myoporum parvifolium



Myoporum parvifolium

Matrix 3



Dichondra repens 'Silver Falls'



Rosmarinus officinalis
prostratus



Trachelospermum
jasminoides

Matrix 4



Acacia cognata 'Waterfall'



Myoporum parvifolium



Myoporum parvifolium

Matrix 5



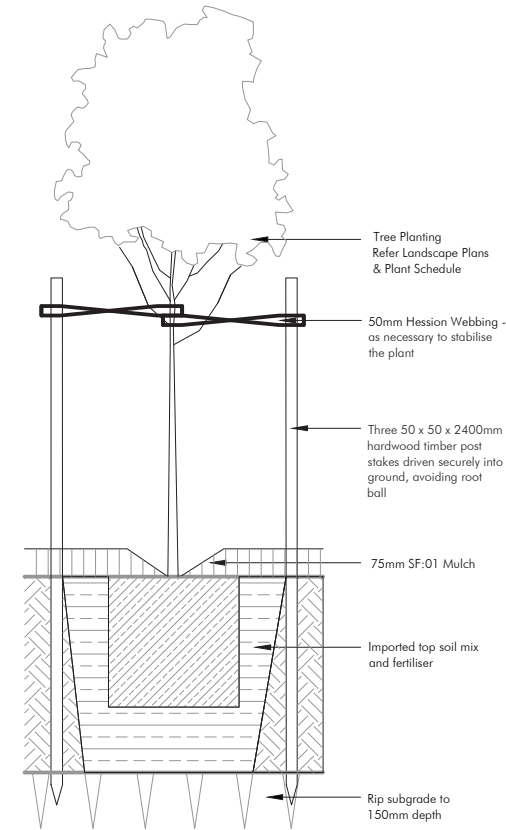
Dichondra repens 'Silver Falls'



Rosmarinus officinalis
prostratus



Trachelospermum
jasminoides



45L TREE PLANTING
SECTION 1:10

GARDEN BEDS

Cultivate to a depth of 200mm so that soil can be worked freely. Apply gypsum at manufacturer's rates to add in de-compaction of site and breakdown of clay colloids. Spread premium blend garden bed mix to a depth of 200mm, when settled. Back filling shall be tampered progressively to match existing soil compaction, to avoid later subsidence. Mound all garden beds to centre. Allow for depth of mulch to finished levels when installing soil mix. Refer to Garden Bed Preparation Detail.

PLANTS

All plants which have been declared, pursuant to section 7 & 8 of the Noxious Weed Act 1993, to be Noxious Weeds within the area of Campbelltown City Council shall be removed on site and replaced with appropriate indigenous or native species.

All labels are to remain on plants and delivery receipts or copies of plant purchases, stating the species, amount, and container sizes of plants, shall be made available to Council's Construction Services or Private Certifier to facilitate certification that the landscape plan and conditions of consent have been implemented.

LAWN AREAS

Cultivate to a depth of 150mm, so that soil can be worked freely. Apply Gypsum at manufacturer's rates to add in de-compaction of site and breakdown of clay colloids. Spread 100mm layer of sandy loam topsoil blend. Rake over to form a smooth, even surface ready for lawn installation. New turf to all areas to be Sir Walter Buffalo. Lay with staggered and close-butted joints along contours, to prepared surface. Water immediately, top dress once established. Refer to Turf detail.

MULCH

Mulch shall be ANL Forest Blend or similar; which is best suited to the plant type and clients needs. Variation from this can only be made with consultation with the project manager. Mulch shall be free of soil, weed

growth or any other foreign matter. Spread mulch evenly to a depth of 75mm over all garden beds. Rake over mulch surface to create an even finish.

IRRIGATION SYSTEM

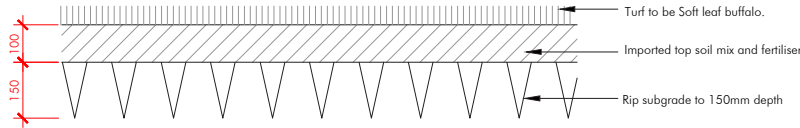
An irrigation system is to be installed to all garden beds, planter boxes, and turf areas shown on the landscape plans. Drip systems are recommended for all garden beds and planter boxes, and pop-up systems for turf areas to the manufactures guidelines. Water connection to mains and requirements for metering are to be installed by a licensed plumber or qualified irrigation contractor.

STREET NUMBER

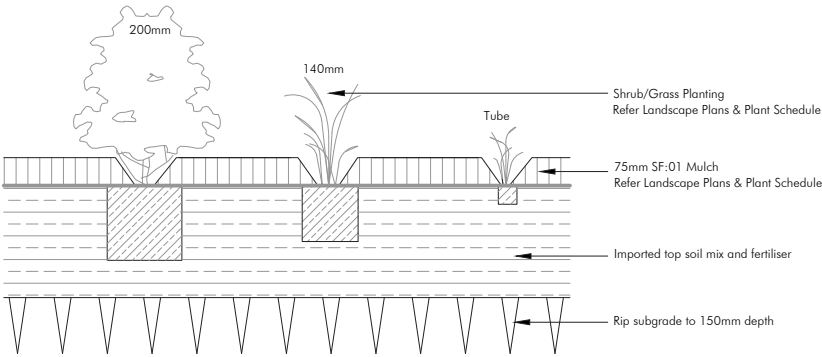
A street number is to be placed on site in a readily visible location, (numbers having a height of not less than 75mm) prior to occupation of the building.

FENCE & GATE

To manufacturer's specification.
Refer architectural for colour selection.



TURF
SECTION 1:10



SHRUB, ACCENT & NATIVE GRASS PLANTING
SECTION 1:10

MAINTENANCE SCHEDULE

The consolidation program shall include, but not limited to, the following items:

Routine Maintenance. Provide routine maintenance for a period of six months after practical completion. Program to include but not limited to plant establishment, watering, mowing, fertilising, weeding, staking, pruning, mulching, pest and disease control and generally maintaining the site in a neat and tidy condition.

Watering: Watering of plants and turf should be done in conjunction with current Sydney Water watering restrictions.

Fertilising: Apply an appropriate lawn fertiliser, at manufacturer's rates, after 6 weeks of installation. Ensure fertiliser is adequately watered and evenly dispersed for healthy even lawn growth.

Mulch of garden beds must adhere to Australian Standard AS4454.

Lawns. Repair lawns in all failed areas.

Disease and Pest Control. If pathological disease or insect pests appear, they are to be controlled using organic methods or pest and disease control. Failing this, chemical sprays may be used, at manufacturer's rates, with prior consent of client.

Replacement. Defects including any dead or unhealthy plant must be replaced or treated within 3 weeks. Missing, dead or unhealthy plants are to be replaced with plants of similar size and quality and identical species/variety, unless a substitution has been approved by Council.

Any Pruning must be carried out to meet Australian Standards AS4373 'Pruning of Amenity Trees' and shall comply with Councils Tree Preservation Order.

Making Good. The contractor shall make good erosion of soil or subsidence which may occur, at no contract variation.

55-20 Plant Schedule by distinctive									
Code	Genus	species	Hybrids/Cultivars	Common Name	Pot Size	Height	Width	Spacing	Qty
Street Trees									
Tr la	Tristaniopsis	laurina		Water Gum	75L	12	10	As Shown	
Public Domain Trees									
Bu ce	Buckinghamia	celsisma		Ivory Curl Flower	100L	8	5	As Shown	
Ca mi	Caryota	mitis		Clustering Fishtail palm	45L	8	4	As Shown	
Ca ca	Calodendron	capense		Cape Chestnut	75L	10	6	As Shown	
Ce gu	Ceratopetalum	gummiferum		NSW Christmas Bush	75L	5	4	As Shown	
Ci li	Citrus	limon		Lemon	25L	4	3	As Shown	
Dr dr	Dracaena	draco		Dragon Tree	400mm	12	10	As Shown	
Fr NA	Fraxinus	excelsior	'Nana'	Designer Ash	45L	5	3	As Shown	
La Zu	Lagerstroemia	indica	x L. Fauriei 'Zuni'	Zuni (purple) Crepe Myrtle	75L	4	3	As Shown	
OI eu	Olea	europaea		Edible Olive	45L	5	3	As Shown	
Shrubs/Screen Planting									
An OC	Anigozanthos	flavidus	'Orange Cross'	Tall Orange Kangaroo Paw	200mm	2	1.5	As shown	
An BR	Anigozanthos	flavidus	'Big Red'	Tall Red Kangaroo Paw	200mm	2	1.5	As shown	
Al ma	Alocaisa	macrorrhiza		Clustering Elephant Ears	300mm	2	2.5	As shown	
As au	Asplenium	australasicum	'Birds Nest'	Birds Nest Fern	300mm	1.5	2	As Shown	
Bl nu	Blechnum	nudum		Fishbone Waterfern	140mm	1	1	As Shown	
Mu pa	Murraya	paniculata		Orange Jessamine	300mm	3	3	As Shown	
Rh SM	Rhaphiolepis	indica	'Snow Maiden'	Snow Maiden Indian Hawthorn	200mm	0.8	0.8	As Shown	
Ph Xa	Philodendron		'Xanadu'	Xanadu	200mm	0.8	0.8	3/m3	
We Ze	Westringia	fruticosa	'Zena'	Coastal Rosemary	200mm	1	1	1/m²	
Climbers									
Tr as	Trachelospermum	asiaticum		Asiatic jasmine	200mm	0.3	2	2/m²	
Groundcovers									
Ac MC	Acacia	cognata	'Mini Cog'	Dwarf Acacia	140mm	0.75	0.75	2/2m²	
Ac Wa	Acacia	cognata	'Waterfall'	River Wattle	140mm	0.3	2	2/m²	
Ba BC	Banksia	spinulosa	'Birthday Candles'	Dwarf Banksia	200mm	0.5	0.5	2/m²	
Cr HS	Crassula	ovata	'Hummel's Sunset'	Sunset Jade Plant	140mm	0.6	0.6	3/m²	
Di SF	Dichondra	repens	'Silver Falls'	Silver Kidney Weed	200mm	0.5	0.6	5/m²	
Di LJ	Dianella	caerulea	'Little Jess'	Little JessParoo Lily	Tube	0.4	0.4	4/m²	
Di cr	Dichelachne	crinita		Long Hair Pumegrass	140mm	0.3	0.3	4/m²	
Ka ST	Kalanchoe	bracteata	'Silver Teaspoons'	Silver Teaspoons	140mm	0.2	1.5	3/m²	
Li Is	Liriope	muscaria	'Isabella'	Hyacinth Liriope	140mm	0.6	0.6	5/m²	
Lo Ve	Lomandra	longifolia	'Verday'	Lomandra Verday	Tube	0.5	0.5	5/m²	
Lo Ta	Lomandra	longifolia	'Tanika'	Dwarf Lomandra	140mm	0.6	0.5	5/m²	
Lo Sh	Lomandra	fluviatilis	'Shara'	Shara Lomandra	140mm	0.5	0.5	5/m²	
My pa	Myoporum	parvifolium		Creeping Boobialla	140mm	0.2	1.5	3/m²	
Ro Pr	Rosmarinus	officinalis	'Prostratus'	Prostrate Rosemary	140mm	0.5	2	2/m²	
Se se	Senecio	serpens		Blue Chalk Sticks	140mm	0.2	0.5	5/m²	
Tr ja	Trachelospermum	jasminoides		Evergreen Jasmine	200mm	0.3	2	2/m²	
Matrix 1 (based on 5:1:2 ratio)									
Di SF	Dichondra	repens	'Silver Falls'	Silver Kidney Weed	200mm	0.5	0.6	5/m²	
Rh SM	Rhaphiolepis	indica	'Snow Maiden'	Snow Maiden Indian Hawthorn	200mm	0.8	0.8	As Shown	
Ac MC	Acacia	cognata	'Mini Cog'	Dwarf Acacia	140mm	0.75	0.75	2/2m²	
Matrix 2 (based on 3:4:5 ratio)									
Ro Pr	Rosmarinus	officinalis	'Prostratus'	Prostrate Rosemary	140mm	0.5	2	2/m²	
Cr HS	Crassula	ovata	'Hummel's Sunset'	Sunset Jade Plant	140mm	0.6	0.6	3/m²	
Se se	Senecio	serpens		Blue Chalk Sticks	140mm	0.2	0.5	5/m²	
Matrix 3 (based on 1:1:1 ratio)									
Ac Wa	Acacia	cognata	'Waterfall'	River Wattle	140mm	0.3	2	2/m²	
Ba BC	Banksia	spinulosa	'Birthday Candles'	Dwarf Banksia	200mm	0.5	0.5	2/m²	
Ka ST	Kalanchoe	bracteata	'Silver Teaspoons'	Silver Teaspoons	140mm	0.2	1.5	3/m²	
Matrix 4 (based on 3:3:2 ratio)									
My pa	Myoporum	parvifolium		Creeping Boobialla	140mm	0.2	1.5	3/m²	
Ph Xa	Philodendron		'Xanadu'	Xanadu	200mm	0.8	0.8	3/m3	
Bl nu	Blechnum	nudum		Fishbone Waterfern	140mm	1	1	As Shown	
Matrix 5 (based on 1:3:1 ratio)									
Tr ja	Trachelospermum	jasminoides		Evergreen Jasmine	200mm	0.3	2	2/m²	
Cr HS	Crassula	ovata	'Hummel's Sunset'	Sunset Jade Plant	140mm	0.6	0.6	3/m²	
Bl nu	Blechnum	nudum		Fishbone Waterfern	140mm	1	1	As Shown	

	plants in matrix
	plants on roof level

